

FOURTEEN ELIZABETHAN DANCES

Tenor Viol II

1. PAVANA

Musical score for Pavana 1, Tenor Viol II. The piece is in 4/2 time and B-flat major. It consists of three staves of music. The first staff begins with a treble clef and a key signature of one flat. The second staff contains a repeat sign and a measure box labeled '10'. The third staff contains a measure box labeled '15' and ends with a double bar line and repeat dots.

2. GALLYARD

Musical score for Gallyard 2, Tenor Viol II. The piece is in 3/4 time and B-flat major. It consists of three staves of music. The first staff begins with a treble clef and a key signature of one flat. The second staff contains a measure box labeled '5'. The third staff contains a measure box labeled '10' and ends with a double bar line and repeat dots.

3. PAVANA

Musical score for Pavana 3, Tenor Viol II. The piece is in 4/2 time and B-flat major. It consists of four staves of music. The first staff begins with a treble clef and a key signature of one flat. The second staff contains a measure box labeled '5'. The third staff contains a measure box labeled '10' and two first ending brackets labeled '1' and '2'. The fourth staff contains a measure box labeled '15' and two first ending brackets labeled '1' and '2'. The piece ends with a double bar line and repeat dots.

4. GALLYARD

Musical score for '4. GALLYARD' in 3/4 time. The score consists of five systems of two staves each (treble and bass clef). Measure numbers 5, 10, 15, and 20 are indicated in boxes above the staves. The piece concludes with a double bar line at the end of the fifth system.

5. RONDA

Musical score for '5. RONDA' in 4/2 time. The score consists of two systems of two staves each. Measure numbers 5, 10, and 15 are indicated in boxes above the staves. The piece features repeat signs and first/second endings (labeled '1' and '2') starting at measure 10.

6. LA REPRESA

Musical score for '6. LA REPRESA' in 3/2 time. The score consists of three systems of two staves each. Measure numbers 5, 10, 15, and 20 are indicated in boxes above the staves. The piece features repeat signs and first/second endings (labeled '1' and '2') starting at measure 20.

7. GALLYARD

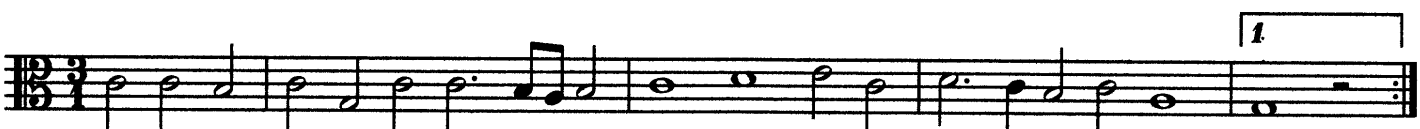
Musical score for '7. GALLYARD' in 3/4 time. The score consists of two systems of two staves each. Measure number 5 is indicated in a box above the first staff. The piece concludes with a double bar line at the end of the second system.



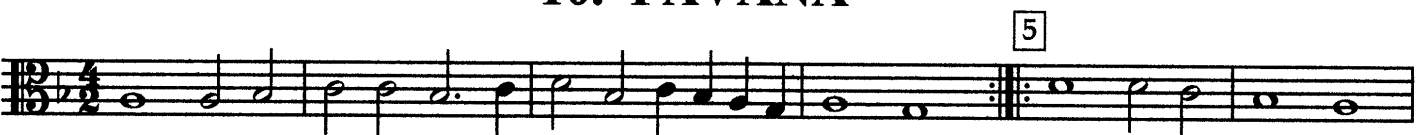
8. ALLEMANA D'AMOUR



9. GALLYARD



10. PAVANA



11. GALLYARD

Musical score for '11. GALLYARD' in 3/4 time. The score consists of four staves of music. The first staff begins with a treble clef and a key signature of one sharp (F#). The music is written in a simple, rhythmic style. Measure numbers 5, 10, and 15 are indicated in small boxes below the staves. The piece concludes with a double bar line and repeat dots.

12. SECONDA DESPERADA

Musical score for '12. SECONDA DESPERADA' in 4/2 time. The score consists of three staves of music. The first staff begins with a treble clef and a key signature of one sharp (F#). The music is written in a simple, rhythmic style. Measure numbers 5, 10, 15, and 20 are indicated in small boxes below the staves. The piece concludes with a double bar line and repeat dots.

13. GALLYARD

Musical score for '13. GALLYARD' in 3/4 time. The score consists of three staves of music. The first staff begins with a treble clef and a key signature of one sharp (F#). The music is written in a simple, rhythmic style. Measure numbers 5, 10, and 20 are indicated in small boxes below the staves. The piece concludes with a double bar line and repeat dots.

14. PAVANA

Musical score for '14. PAVANA' in 4/2 time. The score consists of three staves of music. The first staff begins with a treble clef and a key signature of one sharp (F#). The music is written in a simple, rhythmic style. Measure numbers 5, 10, and 15 are indicated in small boxes below the staves. The piece concludes with a double bar line and repeat dots.