

# FOURTEEN ELIZABETHAN DANCES

Treble Viol

## 1. PAVANA

Musical notation for the first Pavana, consisting of three staves. The first staff starts with a measure marked '5'. The second staff starts with a measure marked '10'. The third staff starts with a measure marked '15'.

## 2. GALLYARD

Musical notation for the second Gallyard, consisting of three staves. The first staff starts with a measure marked '5'. The second staff starts with a measure marked '10'.

## 3. PAVANA

Musical notation for the third Pavana, consisting of four staves. The first staff starts with a measure marked '5'. The second staff starts with a measure marked '10'. The third staff starts with a measure marked '15' and includes first and second endings. The fourth staff starts with a measure marked '20' and includes first and second endings.

## 4. GALLYARD

Musical score for '4. GALLYARD' in 3/4 time. The piece consists of five staves of music. Measure numbers 5, 10, 15, and 20 are indicated in boxes above the staves. The key signature has one sharp (F#).

## 5. RONDA

Musical score for '5. RONDA' in 4/2 time. The piece consists of two staves of music. Measure numbers 5, 10, and 20 are indicated in boxes above the staves. The key signature has one sharp (F#). The score includes repeat signs and first/second endings.

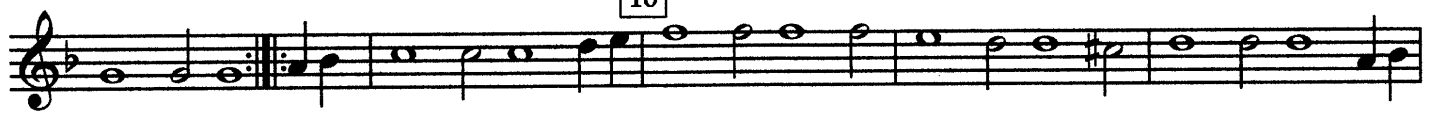
## 6. LA REPRESA

Musical score for '6. LA REPRESA' in 3/2 time. The piece consists of three staves of music. Measure numbers 5, 10, 15, and 20 are indicated in boxes above the staves. The key signature has one sharp (F#). The score includes repeat signs and first/second endings.

## 7. GALLYARD

Musical score for '7. GALLYARD' in 3/4 time. The piece consists of two staves of music. Measure number 5 is indicated in a box above the second staff. The key signature has one sharp (F#).

10



15



### 8. ALLEMANA D'AMOUR

5



10

15



20

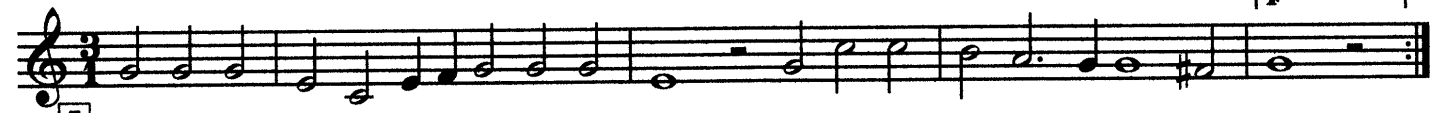


25



### 9. GALLYARD

1



5

10



15



### 10. PAVANA

5



10



## 11. GALLYARD

Musical score for '11. GALLYARD' in 3/4 time. The piece consists of four staves of music. The first staff begins with a treble clef and a key signature of one sharp (F#). The melody is written in a simple, rhythmic style. Measure numbers 5, 10, and 15 are indicated in small boxes below the staves. The piece concludes with a double bar line and repeat dots.

## 12. SECONDA DESPERADA

Musical score for '12. SECONDA DESPERADA' in 4/4 time. The piece consists of three staves of music. The first staff begins with a treble clef and a key signature of one sharp (F#). The melody is more complex than the previous piece, featuring some chromaticism. Measure numbers 5, 10, and 15 are indicated in small boxes below the staves. The piece concludes with a double bar line and repeat dots.

## 13. GALLYARD

Musical score for '13. GALLYARD' in 3/4 time. The piece consists of three staves of music. The first staff begins with a treble clef and a key signature of one sharp (F#). The melody is simple and rhythmic. Measure numbers 5, 10, and 15 are indicated in small boxes below the staves. The piece concludes with a double bar line and repeat dots.

## 14. PAVANA

Musical score for '14. PAVANA' in 4/4 time. The piece consists of three staves of music. The first staff begins with a treble clef and a key signature of one sharp (F#). The melody is more complex than the previous pieces, featuring some chromaticism. Measure numbers 5, 10, and 15 are indicated in small boxes below the staves. The piece concludes with a double bar line and repeat dots.