

II
Tenor Viol

Two Prayers to the Virgin
a5

Loyset Compere

Virgo celesti

Vir - go ce - le - sti, de - co - ra - ta
par - tu, Sem - per hu - ma - no ge - ne -
ri mi - ser - ta, mi - ser - ta,
lu - gi - ter se - se ti - bi de - di - can -
tes, A - spi - ce ser - vos, Vir -
- go Ma - ri - a.

5 10 15 20 25 (b)

O decus ecclesiae

Heinrich Isaac

5 10 15 20 (b)

25



30



35



b



40



45



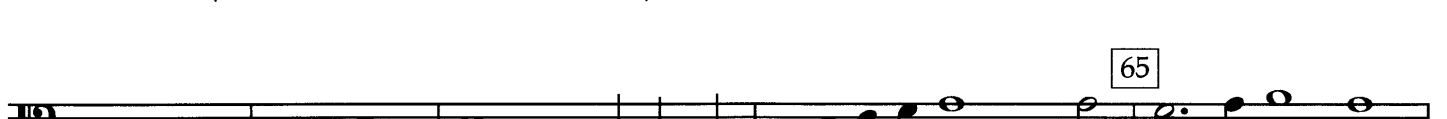
50



55



60



65



70



75



3 3 3

Secunda Pars

Musical staff 1, measures 1-5. Measure 5 is marked with a box containing the number 5. The staff shows a sequence of notes in a 3/4 time signature, including a half note and several quarter notes.

Musical staff 2, measures 6-9. The staff continues the melodic line with quarter and eighth notes.

Musical staff 3, measures 10-14. Measure 10 is marked with a box containing the number 10. The staff features a more active melodic line with many eighth notes.

Musical staff 4, measures 15-19. Measure 15 is marked with a box containing the number 15. The staff shows a mix of quarter and eighth notes.

Musical staff 5, measures 20-24. The staff includes a flat symbol (b) above a note in measure 21. The melody continues with quarter and eighth notes.

Musical staff 6, measures 25-29. Measure 20 is marked with a box containing the number 20. The staff shows a continuation of the melodic pattern.

Musical staff 7, measures 30-34. Measure 25 is marked with a box containing the number 25. The staff features a sequence of quarter notes.

Musical staff 8, measures 35-39. Measure 30 is marked with a box containing the number 30. The staff shows a melodic line with eighth notes.

Musical staff 9, measures 40-43. Measure 35 is marked with a box containing the number 35. The staff features a sequence of quarter notes.

Musical staff 10, measures 44-48. Measure 40 is marked with a box containing the number 40. The staff shows a melodic line with a flat symbol (b) above a note in measure 47.

