

III

De la Court

Robert Parsons

Tenor Viol

Musical score for Tenor Viol, measures 1-60. The score is written in 4/2 time and features a key signature of one flat (B-flat). The notation includes various note values, rests, and dynamic markings. Measure numbers are indicated in boxes above the staff lines.

Measures 1-60 are shown in 12 staves. Measure numbers are indicated in boxes above the staff lines: 5, 10, 15, 20, 25, 30, 35, 40, 45, 50, 55, 57, 60.

Measure 40 includes a dynamic marking (b) .

Secunda pars

Musical score for "Secunda pars" in G minor, 3/4 time. The score consists of 14 measures, each with a measure number in a box above it. The key signature has one flat (Bb). Measure 65 starts with a common time signature (C) and a flat (b) above the staff. Measure 70 has a fermata (h) above it. Measure 80 has a fermata (h) above it. Measure 105 has a sharp (#) above it. Measure 110 has a 6/4 time signature change. Measure 120 has a sharp (#) above it. Measure 130 has a flat (b) above it. Measure 140 ends with a 2/4 time signature change and a fermata (h) above it.

65

70

75

80

85

90

95

100

105

110

115

120

125

130

135

140

Secunda pars (with alternative ending)

Musical score for 'Secunda pars (with alternative ending)'. The score is written in 12/8 time and consists of 15 measures, each marked with a measure number in a box. The key signature is one flat (B-flat). The notation includes treble and bass clefs, various note values (quarter, eighth, and sixteenth notes), rests, and accidentals (sharps and flats). The score concludes with a double bar line and repeat dots.

65 70

75

80

85 90

95

100

105

110

115 120

125

130

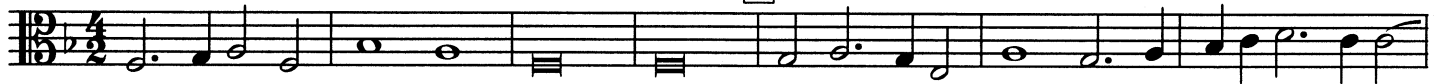
135

140 145

150

Ave Maria

5



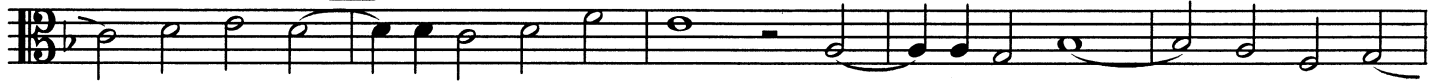
A - ve_ Ma - ri - a, a - ve Ma - ri - - - -

10



- a, Ma - ri - a, Ma - ri - a gra - ci - a ple -

15



- na, gra - ci - a ple - na, gra - ci - a ple - -

20



- - - na, Do - mi nus te - - cum, Do -

25



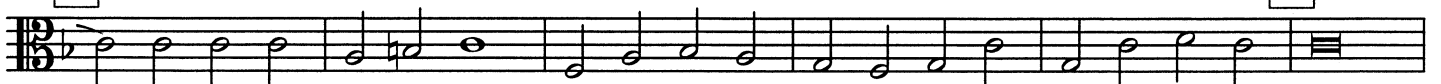
- mi - nus te - - - - - - - - - cum,

30



Do - minus te - - cum. Be - ne - dic - ta tu be - ne - dic - ta tu be -

35



- ne - dic - ta tu in mu - li - er - i - bus, in mu - li - er - i - bus,

45



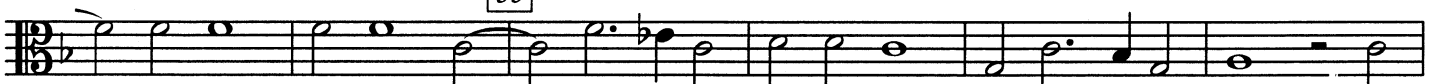
et be - ne - dic - tus fruc - tus ven tris tu - i, fruc - tus ven - tris tu -

50



- i, fruc - tus ven tris tu - i, et be - ne - dic - tus, et be - ne - dic - tus fruc

55



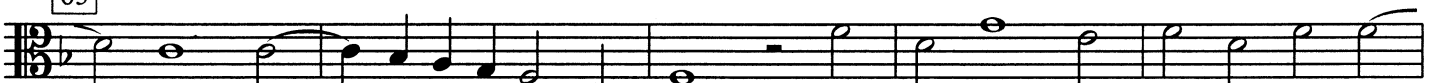
- tus ven - tris tu - - i, fruc tus ven - tris tu - i, A -

60



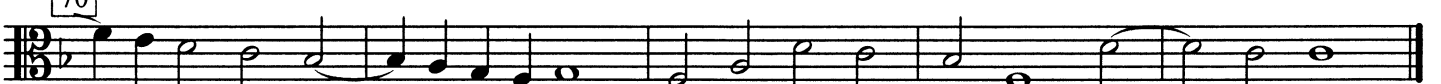
- - - - - men, a - - - -

65



- men, a - - - - men, a - - - - men, a -

70



- - - - - men, a - - - - - men.