

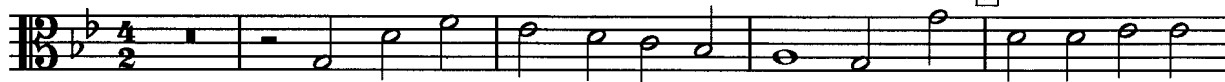
Two Settings of "When shall my sorrowful sighing slake"

a4

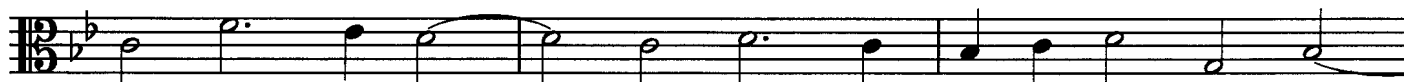
1. When shall my sorrowful sighing slake

Thomas Tallis

Tenor Viol



When shall my sorrowful sigh - ing slake, When shall my woe-ful
How long shall I in woe— la - ment, How long shall I in



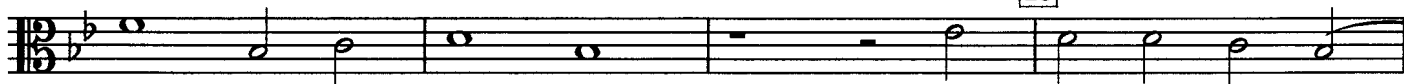
wail - - - - ing, woe - ful wail - - - -
care com - - - - -plain, How long shall I in care—



- - - ing cease, When shall my tears and mourn -
com - plain, How long shall dan - ger me—



- - - ing— make— Mer - cy and pi - ty
tor - - - ment— Aug - ment - ing still my



me to— re - lease? When shall the pen - sive—
dead - - - ly pain? Till hope and dread be -



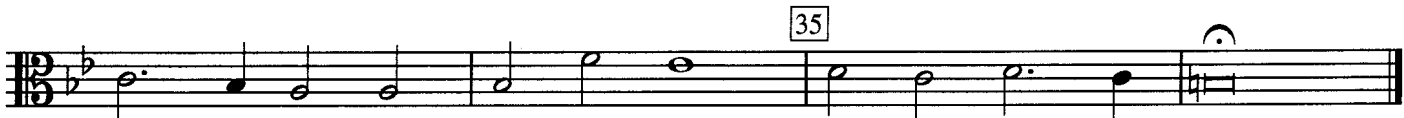
— heart— find— peace, When shall the mind—
- tween— them— twain A - gree that hope



— find qui - et rest.— That hath been long with thought—
— have her re - quest.— Till then live I with thought—



— op - - - - - prest? That hath been long with
— op - - - - - prest. Till then live I with



thought— op - - - - - prest?
thought— op - - - - - prest.

2 Report vpon quhan sall my sorifull sicing slaik

as alsoe ane lesson vpon the feiftie psalme

John Black

5

10

15

20

25

30

35

40

45

50